



Georgia Division of Family and Children Services

Georgia CASA Conference

DATE: April 22, 2017

Deborah Burrus

State Permanency Director

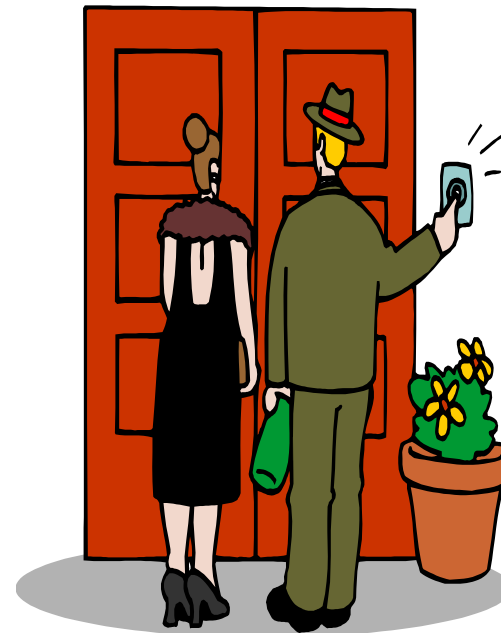
Permanency At The Front Door

- Discussion regarding where permanency begins
- What permanency should look like



PERMANENCY AT THE FRONT DOOR

- Sibling Placement
- Diligent Search
- Placement Type
- Permanency Plan



VALUES

- WHY SHOULD SIBLINGS BE PLACED TOGETHER?



Siblings – Former Foster Youth Says

“an extra punishment, a separate loss and another pain that is not needed”



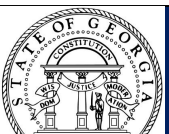
Sibling – Definition

- Full or half-siblings (including children relinquished or removed at birth)
- Step-siblings
- Adopted children in the same household, not biologically related
- Children born into the family and their foster/adopted siblings



Sibling – Definition con't

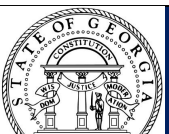
- Other close relatives or nonrelatives living in the same kinship home
- Foster children in the same family
- Group-home mates with close enduring relationships
- Individuals conceived from the same sperm or egg donor
- Children of the partner or former partner of the child's parent.



Fostering Connections to Success and Increasing Adoptions Act of 2008

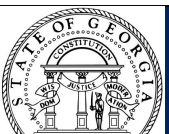
Fostering Connections Act of 2008 requires:

- A) to place siblings removed from their home in the same foster care, kinship or adoptive placement, unless the State documents that such placement would be contrary to the safety or well-being of any of the siblings; and



DILIGENT SEARCH FOR RELATIVES

A critical part of the work we must do involves searching for relatives.



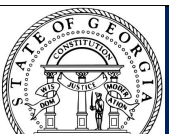
Fostering Connections to Success and Increasing Adoptions Act of 2008

Child Welfare Agencies must provide notice to relatives within 30 days of removing a child from his or her home.



FATHERS

Fathers are an important part of the family dynamics.



DILIGENT SEARCH FOR RELATIVES

- Engage mothers in identifying relatives.
- Engage fathers in identifying relatives.



ASK THE CHILD

ASK ME,
I KNOW MY
RELATIVES!



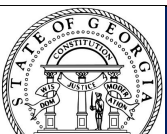
TOOLS AND TECHNIQUES

- Review CPS Investigation
- Review CCFA
- Have family complete a genogram
- Ask relatives about other relatives
- Check school records for emergency contacts
- Use social media and search sites
- Accurint



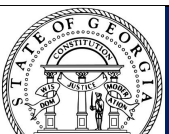
APPROPRIATE PLACEMENT

- Parental Capacity
- Child Vulnerability



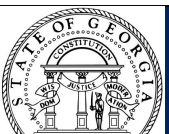
KNOW THE CHILD

- Age of child
- Child vulnerabilities (needs)
- Siblings
- Relatives
- History



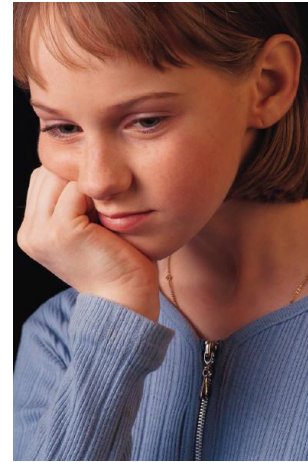
KNOW THE FAMILY

- Read the Family Assessment
- Know the family's strengths
- Know the family's weaknesses
- Know their protective capacity
- Stay abreast of changes



PLACEMENT TYPE

- Assess the child
- Assume that the first placement is the last placement

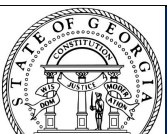


CASE PLAN TYPES

Reunification Case Plan- law requires reasonable efforts to reunify and reunification services unless grounds exist for a non-reunification case plan.

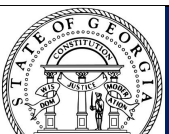
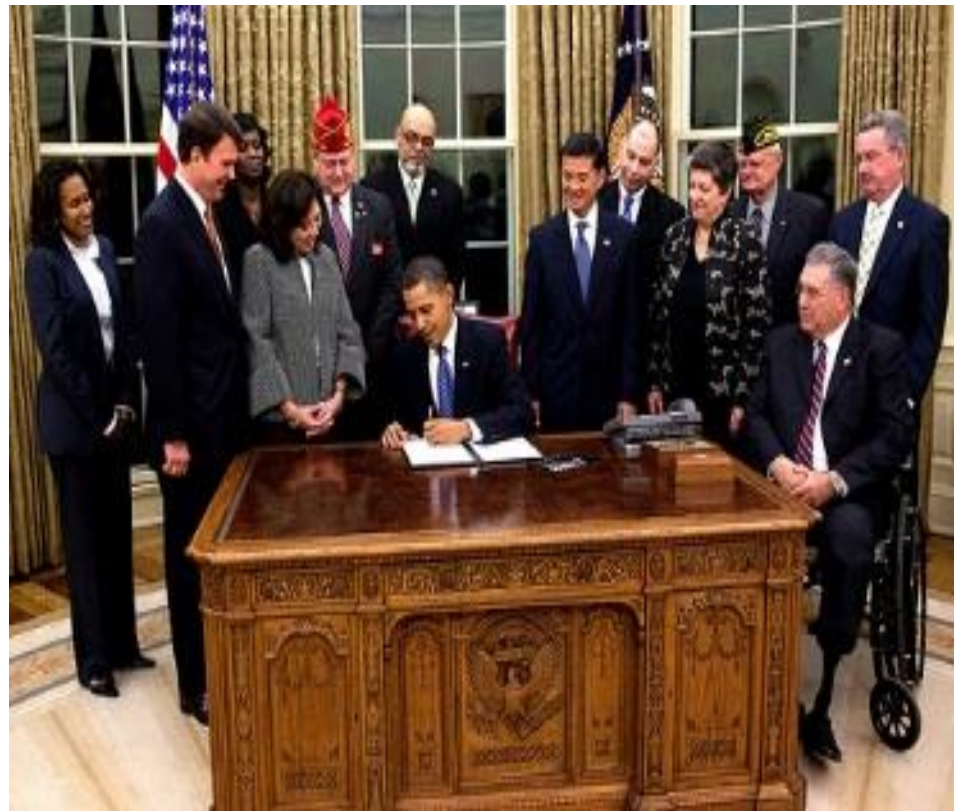
Non-Reunification Case Plan- No reunification services required ; can be granted if, murder of a child, previous TPRs exist, third entry in care or an egregious act occurred .

Concurrent Case Plan - Should be used when a family has significant history in CPS with the agency and when the prognosis tool indicates a concurrent plan is appropriate.



Permanency Plans

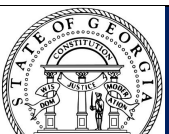
- Reunification
- Adoption
- Guardianship
- APPLA



SFY17 (ytd) Finalizations by Region

Region	< = 24 Months	< = 24 Months %	> 24 Months	> 24 Months %	SFY17(ytd) Finalization
01	59	50.4%	58	49.6%	117
02	33	41.3%	47	58.8%	80
03	43	32.6%	89	67.4%	132
04	13	37.1%	22	62.9%	35
05	25	34.7%	47	65.3%	72
06	22	37.3%	37	62.7%	59
07	1	5.9%	16	94.1%	17
08	0	0.0%	39	100.0%	39
09	2	13.3%	13	86.7%	15
10	5	13.2%	33	86.8%	38
11	9	17.0%	44	83.0%	53
12	17	30.9%	38	69.1%	55
13	3	3.8%	76	96.2%	79
14	9	14.1%	55	85.9%	64
Statewide	241	28.2%	614	71.8%	855

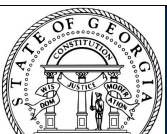
**Goal: To Increase the Percentage of Children in Foster Care with Adoption that Finalize (within 24 months of entering care) from 28% to 52% by July 2018*



Guardianship as the Permanency Plan

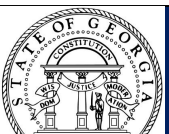
Law requires that adoption be ruled out as the better plan before the selection of guardianship.

- Children under age 14
- All children that the agency has achieved TPR
- Youth who have expressed the desire



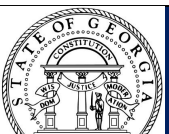
REQUIREMENTS FOR GUARDIANSHIP

- Relative or Non-Relative
- Child is unlikely to return home
- TPR is not in the child's best interest and Adoption is impractical or inappropriate
- Placement is stable and in the best interest of the child.



Requirements for Guardianship (con't)

- Family Team Meeting
- All the key players
- Discussion of goal
- Discussion of supports



Permanency Options

Adoption

vs.

Guardianship

